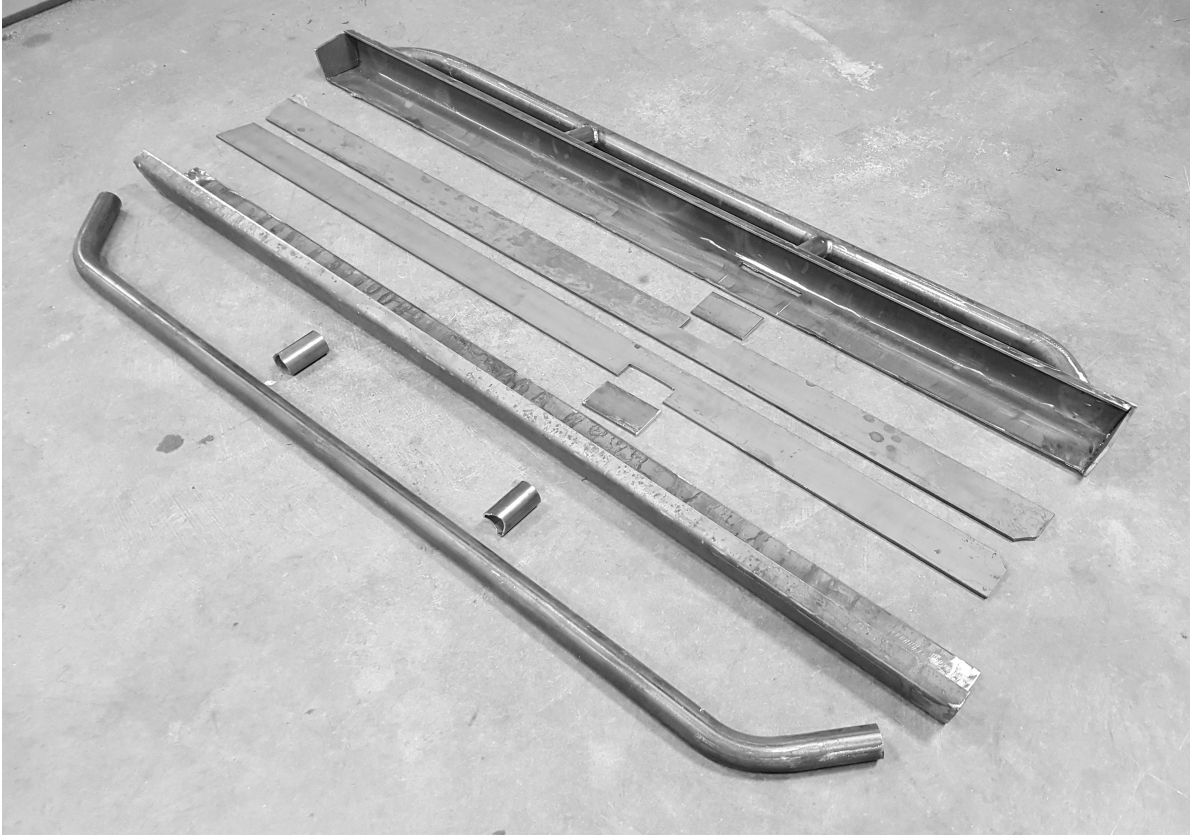


SPADANO ENTERPRISES

ZJ GRAND CHEROKEE ROCKers / SLIDERS



THANK YOU!

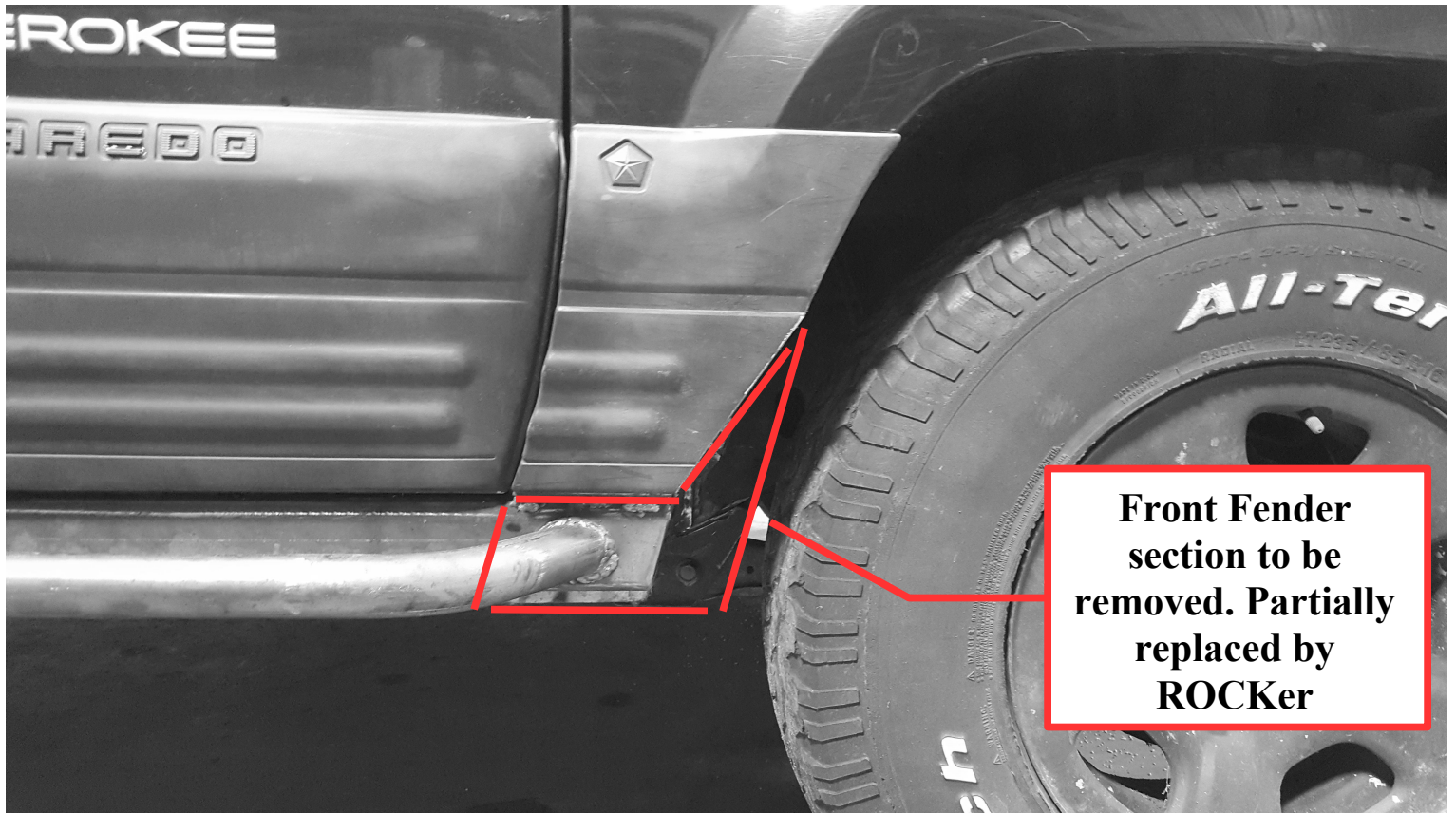
First off, I'd like to personally thank you for purchasing our product. It brings us a great deal of pride and satisfaction knowing that others like our products.

We believe our ROCKer kit is a far superior product then our competitors and a better alternative to box tubes.

We hope that with these instructions you will find the installation of the ROCKer kit a relatively straight forward and easy job.

PLEASE NOTE!

This ZJ ROCKER kit was extensively designed to provide an easy replacement to commonly rusted out factory rocker panels. We found replacement from the front wheel well to the rear wheel well the BEST and STRONGEST option. This will gain you increased tire clearance and off road performance. THIS WILL REQUIRE SLIGHTLY MODIFYING YOUR VEHICLE. See image below



After cutting your front fenders and installing the ROCKER kit, you may reattach them by using a sheet metal screw or tack welding them to the ROCKER. The plastic will hide both methods. In the rear, trimming may also be done to greatly increase tire clearance.

👉 IMPORTANT INFORMATION

- ☞ We highly recommend that a qualified and/or certified welder perform this installation.
- ☞ It is the responsibility of the customer and/or the welder to wear appropriate PPE (Personal Protective Equipment) at all times when performing this installation.
- ☞ It is the customers/installers responsibility to read and understand all steps in the instructions before the installation begins.
- ☞ ***While we have total faith in this product's ability to protect the occupants of the vehicle in the event of an accident/crash, we make no claims to meeting DOT or OEM ratings. Additionally we have no control over installation technique, competence and quality. Therefore the ROCKER panel sliders are sold at your own risk, for off road use only.***

IF AT ANYTIME DURING THE INSTALL YOU HAVE QUESTIONS, PLEASE, DO NOT HESITATE TO CONTACT US. THE ONLY DUMB QUESTION IS ONE NOT ASKED.

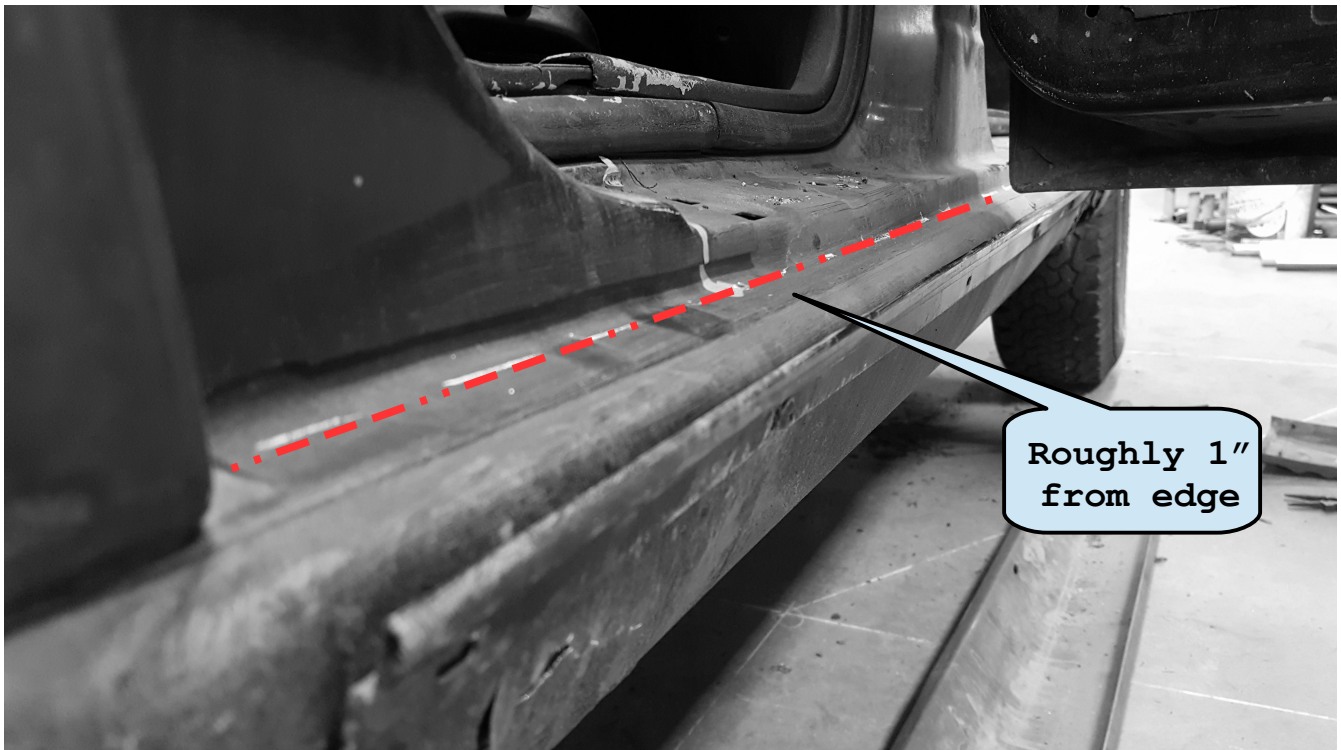
OUR PHONE # 978-846-3502

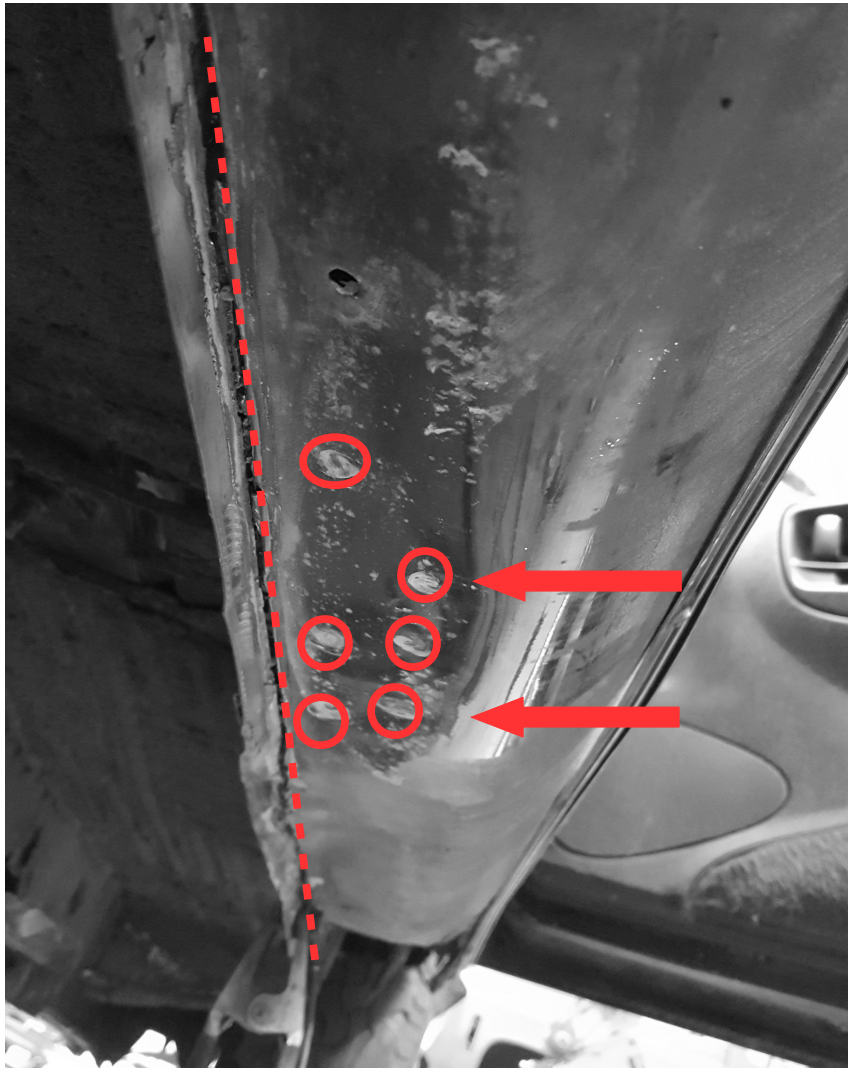
OR

EMAIL JHS@SPADANOENTERPRISES.COM

Installation Instructions

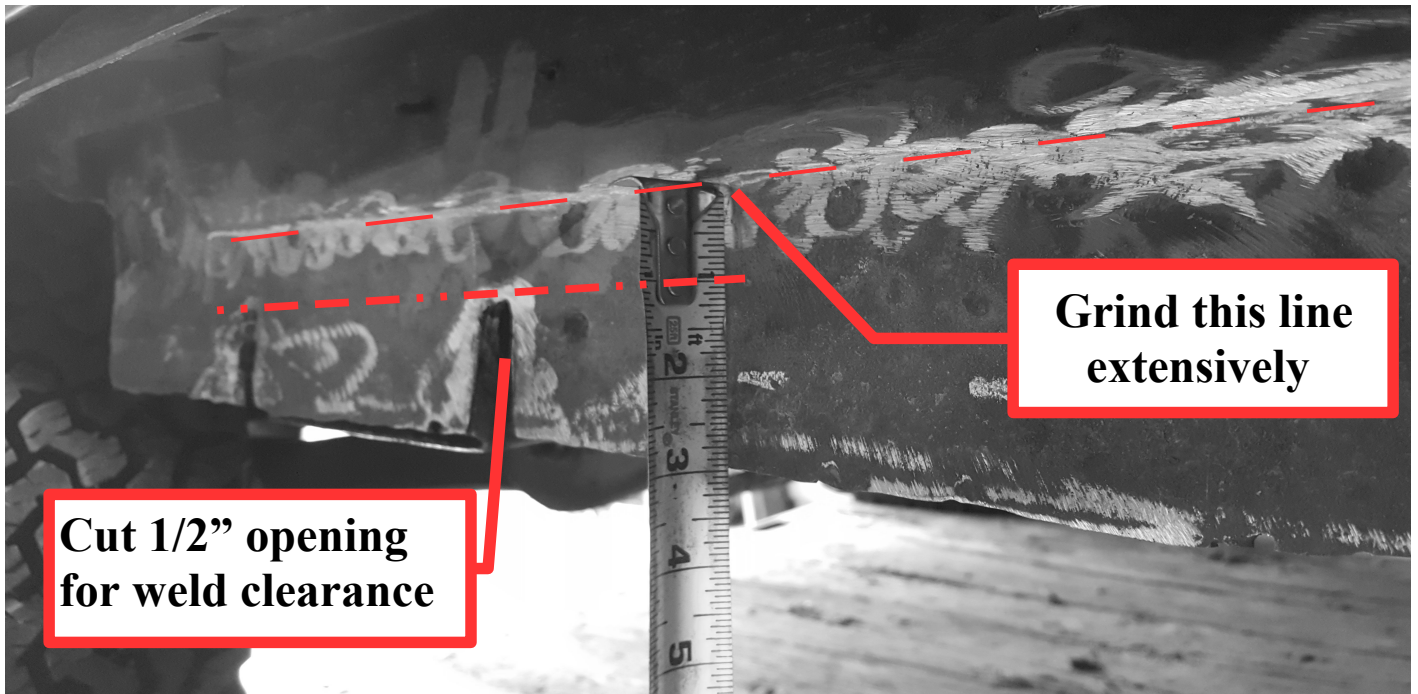
- 1) While the work can be done with the vehicle on the ground, we recommend for ease of installation to either put it on jack stands or on a two post lift. ALWAYS follow safety practices for lifting a vehicle.
- 2) Disconnect the vehicle battery. Pull up all plastic kick trim on the interior. Pull back carpet at least 6" away from the welding/cutting area. Pull back and wire harnesses and / or other flammable items.
- 3) Mark cut location. Its relatively easy on the ZJ, as you will use the body line as the cut line. I like to keep the cut a bit under the line so I have excess metal to weld the thicker ROCKER panel to later. Its always easier to cut more metal then to try and "grow it back" so take your time. See picture.



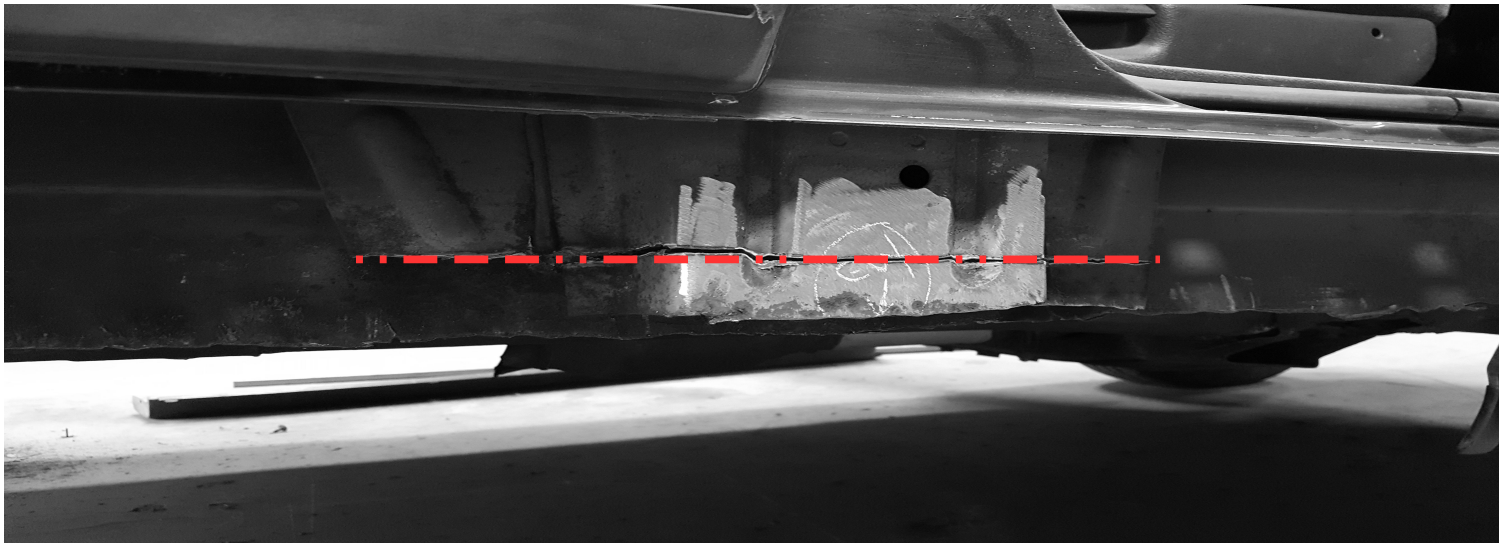


4) Next, the inner rocker will be cut along with the B pillar. Start by cutting above the factory pinch weld seam. Next, either drill or cut the factory spot welds that hold the inner B pillar to the outer rocker.

5) With the old rocker panel cut away and removed, now you can start prepping the existing metal. Spend some time grinding and cleaning the area thoroughly. The rear torque box will need to be notched now at this time. See picture on the next page. Afterwards, a good weld through primer can be applied or a rust converter of your choice to the hollow cavity.



6) Next, Trim the B pillar down. Then be sure to grind the surface very well after to prepare for the new B pillar tie plate in the kit.





7) Position the inner ROCKER flat bar onto the jeep inner rocker. How high you set it will vary slightly, using the line you shown in step 5 is a very close guide. The best thing to do is tack weld or clamp it in place, then fit the outer ROCKER panel onto it to verify how they meet up as well as how straight it looks.

Be sure to orient it correctly (LH/RH Front/Rear)

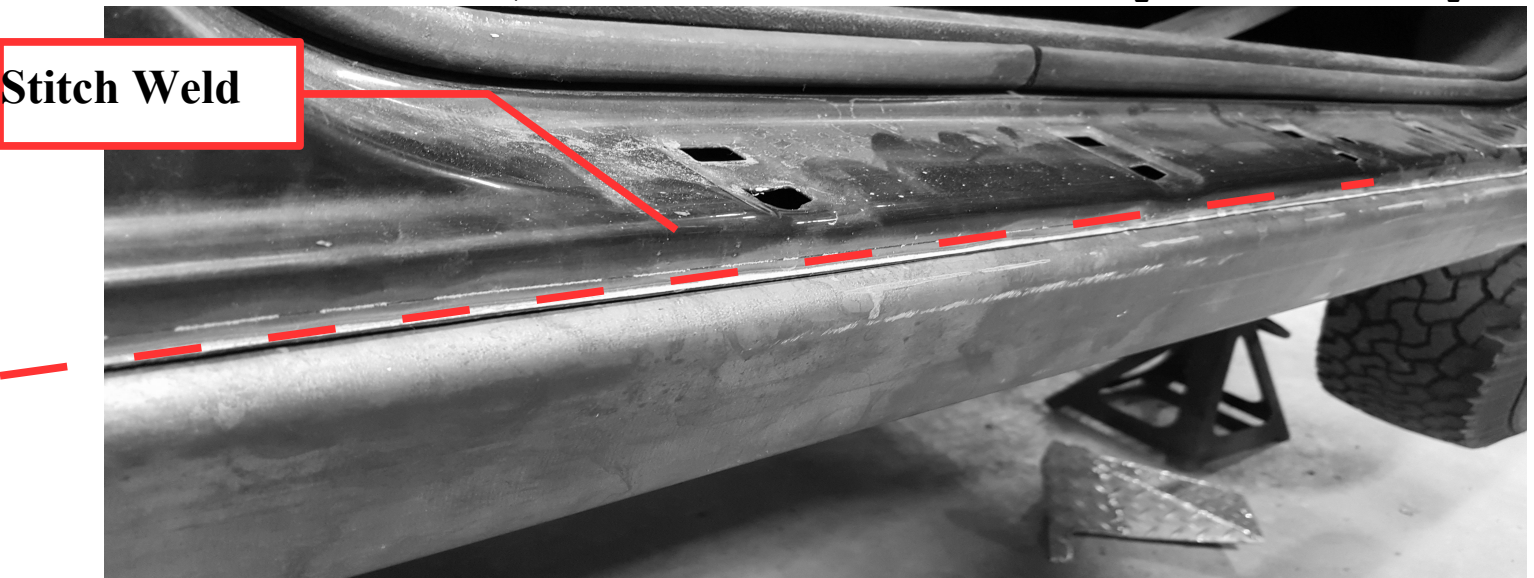


8) Once you've ensured a good fit from the inner ROCKER to the outer ROCKER, go ahead and weld the inner rocker. Stitch or skip welding is all that's really needed. A good seam sealer will seal up any areas not welded. You will want to weld the inside and outside of the inner ROCKER panels to the existing metal. Also be sure to weld the Torque boxes to the new inner ROCKER

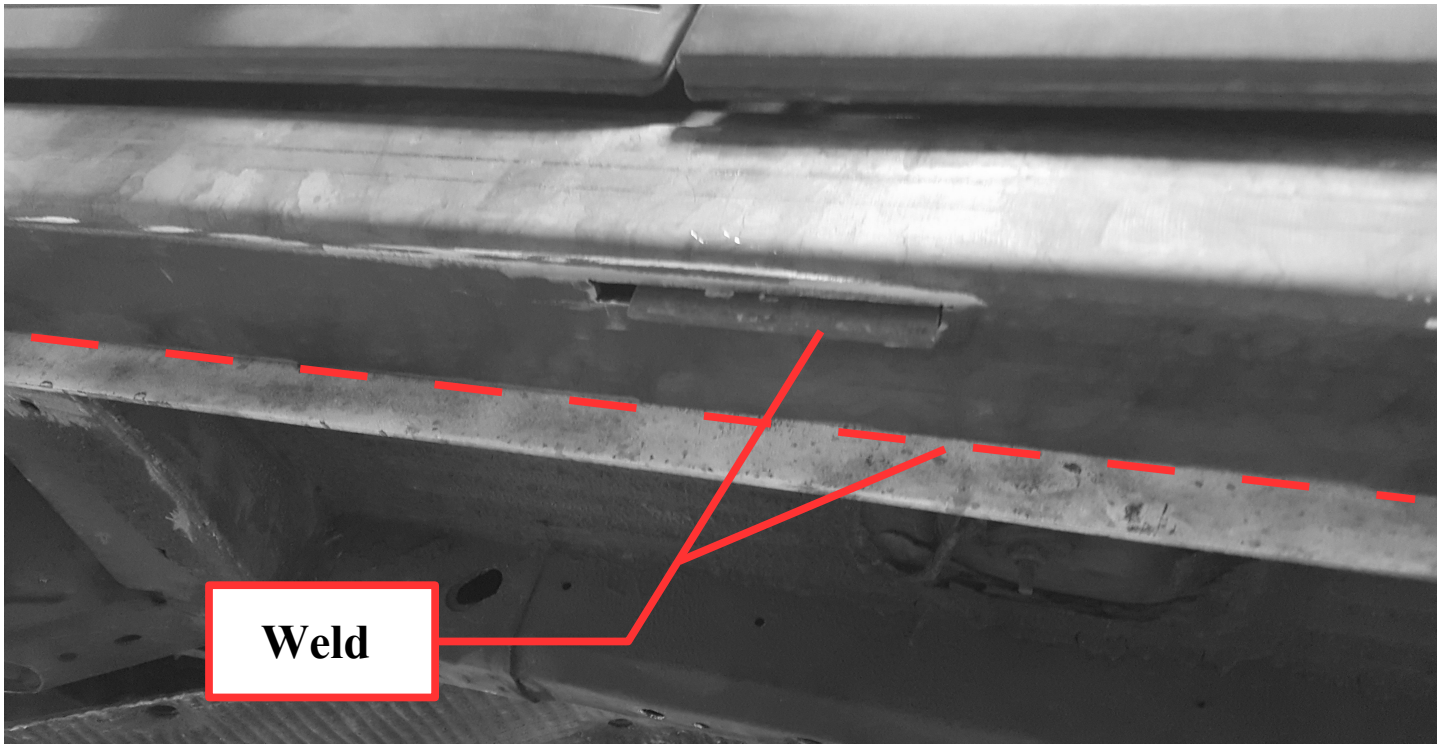
- 9) Tack weld the B-pillar tie-in plate to the B pillar. Then, test fit the outer ROCKER to verify the slot notch will line up with the tie plate and it will pass through. Once it does, fully weld the plate to the B pillar.



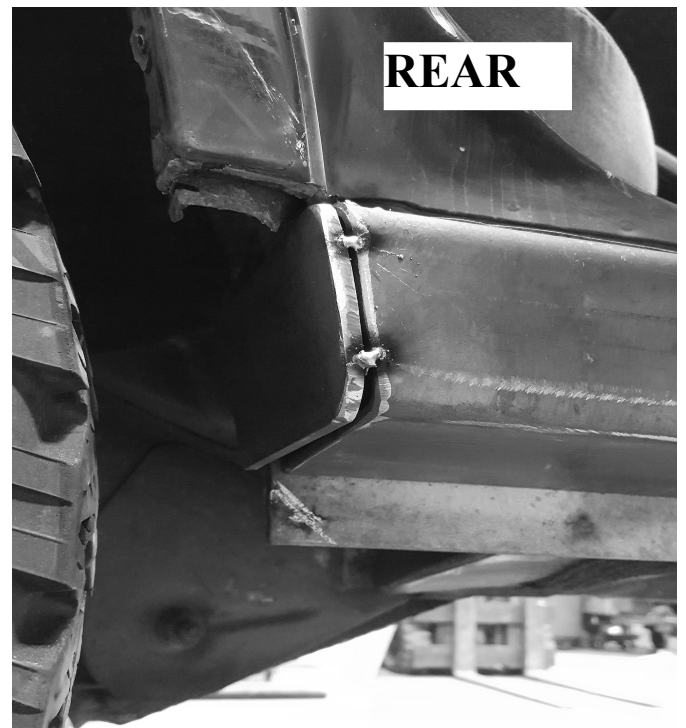
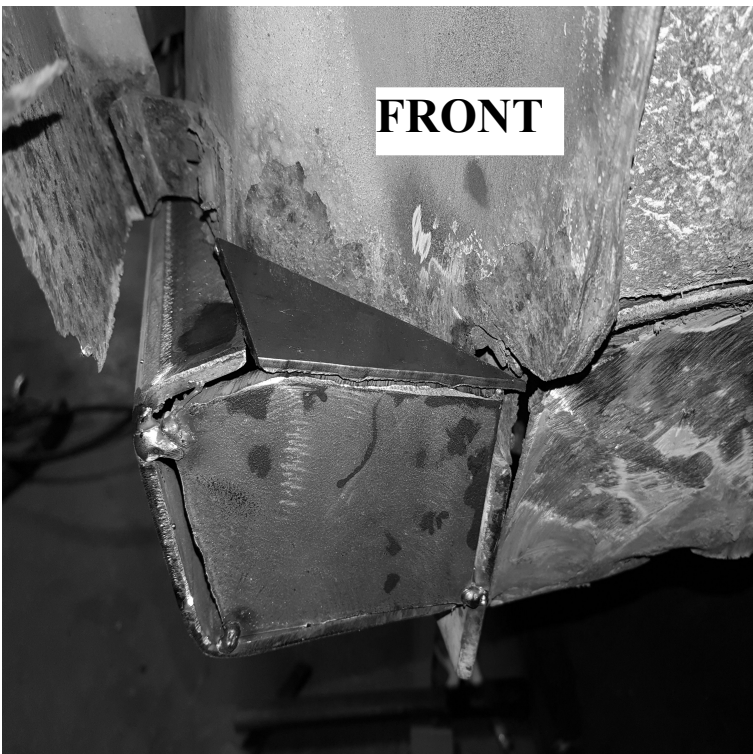
- 10) Position and attach the outer ROCKER. Use spacers and clamps to maintain an even gap under the doors. Take your time, and always clamp before you tack & tack before you weld. Once you are satisfied with its position and fit, go ahead and weld it in. Again, a stitch or skip weld is all that's required. You will be welding the outer ROCKER to the inner ROCKER, and to the door sill area you cut in step 3.



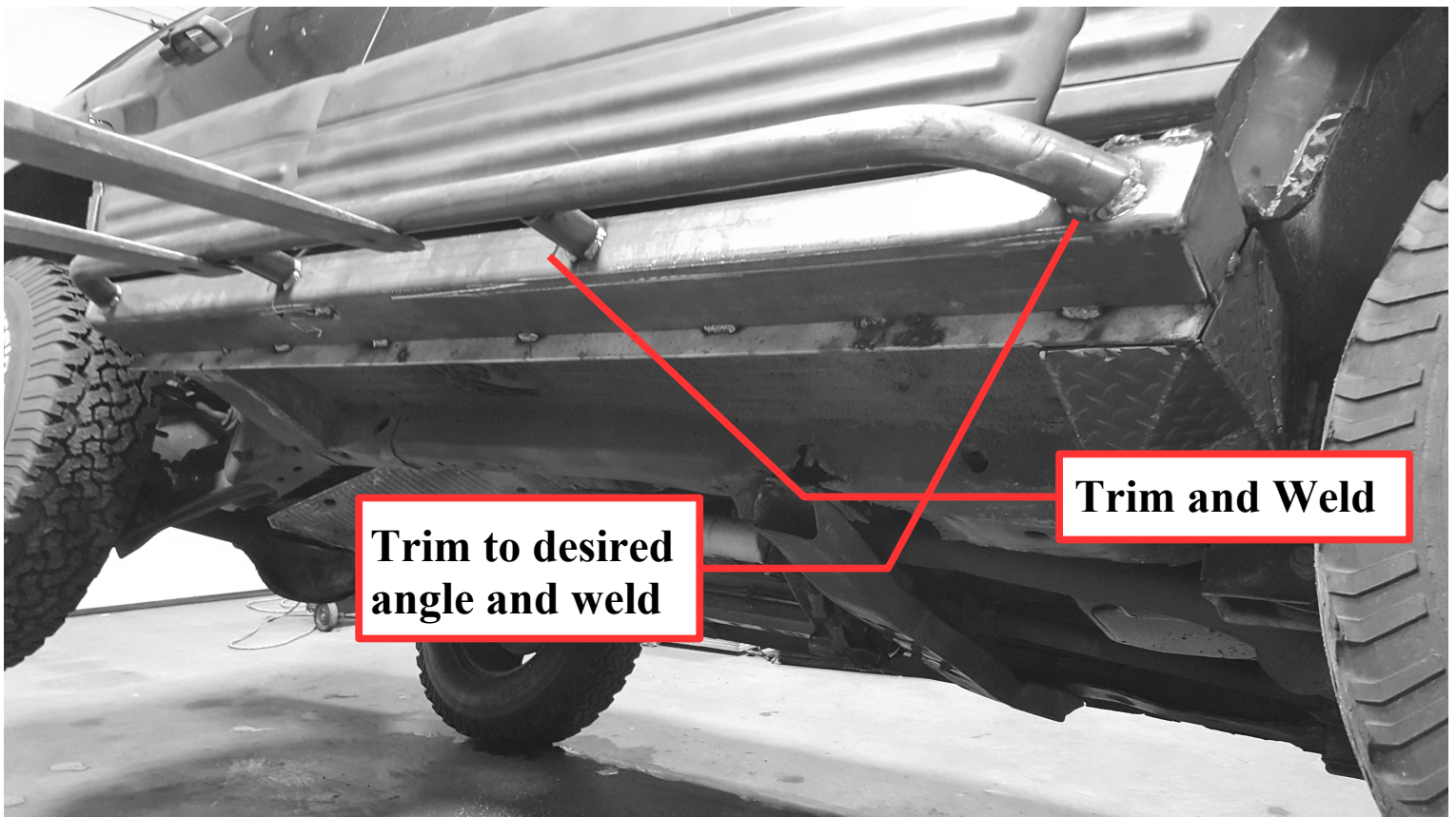
11) Now that the outer ROCKER is welded to the inner ROCKER, and door sill area, go ahead and do a complete weld around the B-pillar support tie in that passes through. We leave them a little long so that you can trim them afterwards. Again, its always easier to cut it then it is to grow it.



12) Now Weld on the supplied end caps. You will want to fully weld these to the outer ROCKER and inner ROCKER.



- 10) If you ordered the kit with sliders, then the next step is to fit them. Once again we leave them a little longer than they need to be. Why? Some people want to angle them down, some people want them flat, etc. Start with the main pipe and cut them at the desired angle and how far you want them to stick out. Once the main pipe fits to your liking, go ahead and tack it in place. Now fit the supports. (2 per side) Again, trimming them at an angle to fit between the ROCKER and the slider.



- 11) Trim any excess metal off and prep for finishing. You'll want to smooth any sharp welds or areas, then de-grease prior to applying a good high quality seam sealer. Its strongly recommended that you seam seal all the areas you cut to seal the rocker.
- 12) Finally use the finish of your choice to coat the ROCKERS and sliders. We recommended something that has a hardener or catalyst due to the amount of "rash" these will see from both off-roading and spray from the wheels.

THANK YOU!

We hope that you have found these instructions helpful in making our ROCKER panel kit a part of your ZJ.



Please provide us with ANY feedback on how we can improve both the instructions, as well as the ROCKERS.

EMAIL - JHS@SPADANOENTERPRISES.COM

We'd love to see pictures of your completed install on our Facebook! Please post your Rig on our page!